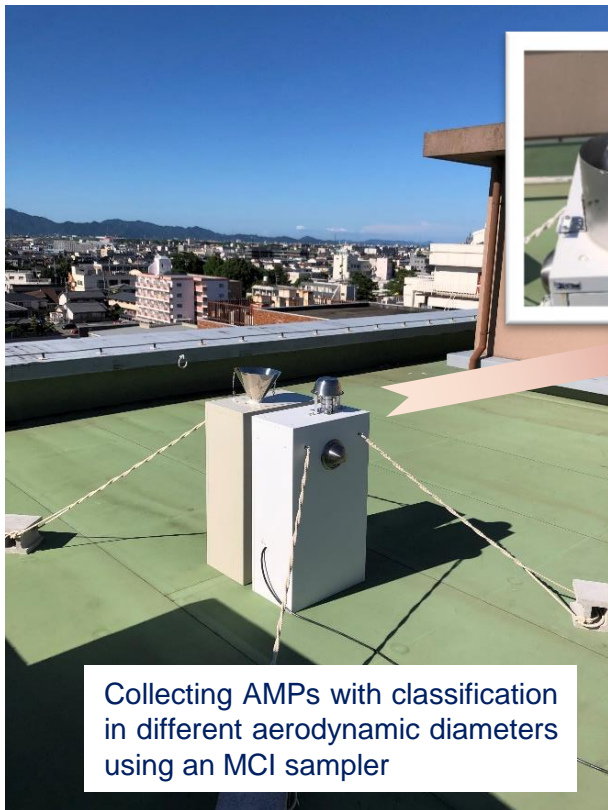
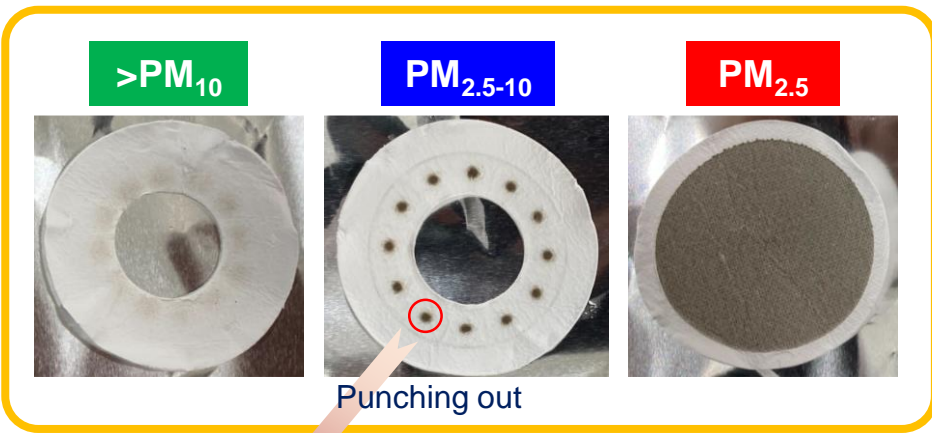


都市大気粉塵中のマイクロプラスチック観測システムの開発



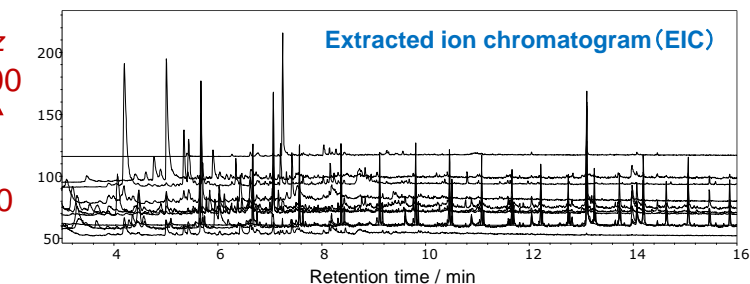
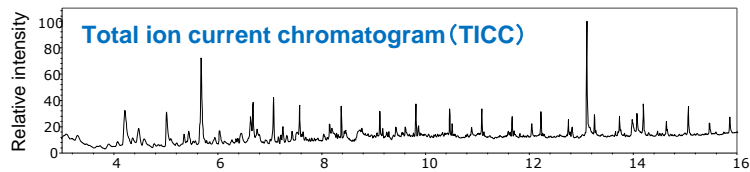
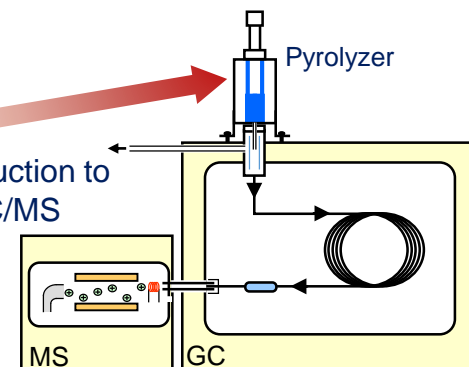
MCI sampler



Putting into a sample cup



Introduction to Py-GC/MS



Polymer $\xrightarrow{\text{Pyrolysis}}$ Pyrolyzates

Target analyte

Separation and detection by GC/MS

Matching with the library (**Identification of polymers**)
Intensity of the characteristic ion (**Quantification**)